

CLIMATIZZAZIONE
VEICOLARE

CONDENSER

Name: *Stuglé*

COD. 12v : A00225ES

COD. 24v : A00226ES

Vtaggio
voltage

12v

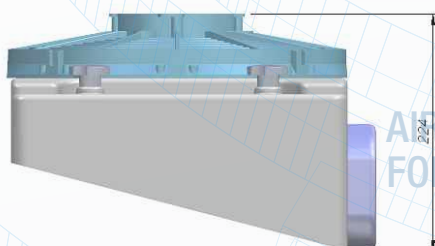
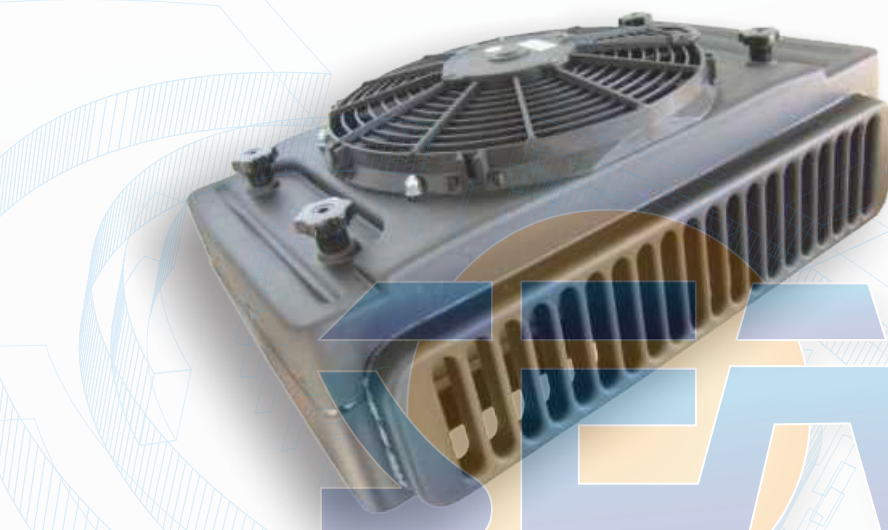
24v

Applicazioni
Applications

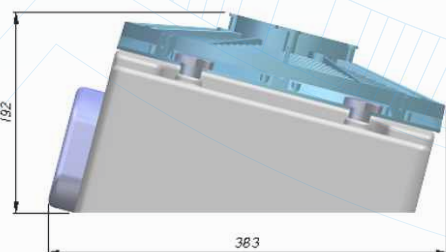
agricultural

special
vehicles

forklifts

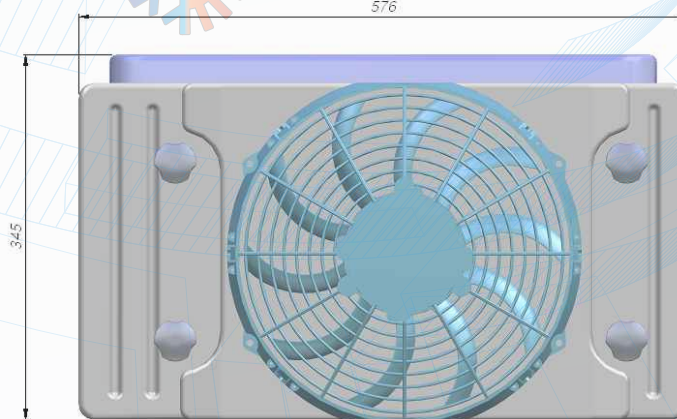
earth
movingAIR CONDITIONING & HEATING
FOR HEAVY-DUTY EQUIPMENT

576



192

383





345

Dati Tecnici / Technical data Daten

Vtaggio / Voltage	Potenza termica dissipabile / Dissipable thermal power (Kw)	peso / weight (Kg)
12v	7	7.2
24v	7	7.2

Descrizione / Description

-  Condensatore a tetto elettroventilato con filtro
-  Roof top condenser with fans and receiver dries