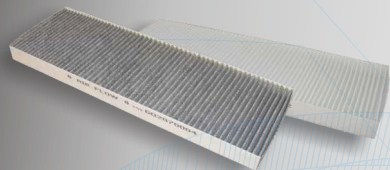
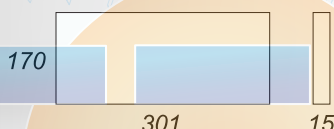
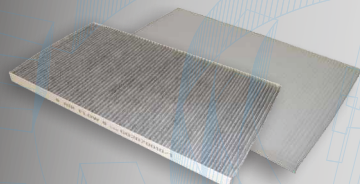


**Filtro aria abitacolo / Cabin air filter - 300x100x20mm**

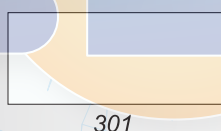
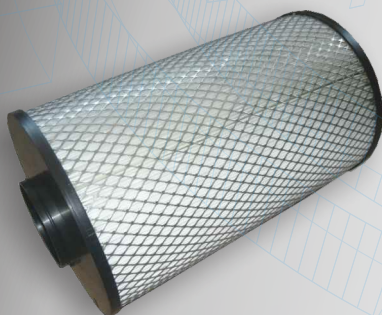
Filtro aria in carta /
COD. G02070002

Filtro a carboni attivi / Activated
carbon filter - COD. G02070002CA

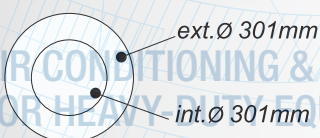
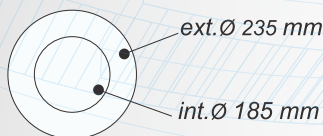
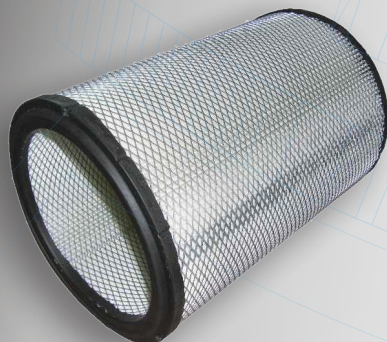
Filtro aria abitacolo / Cabin air filter - 301x170x15mm

Filtro aria in carta /
COD. G02070010

Filtro a carboni attivi / Activated
carbon filter - COD. G02070010CA

Filtro aria abitacolo / Cabin air filter - 301x170x15mm

Filtro HEPA / HEPA filter
COD. G02070032-HEPA

**Filtro aria abitacolo / Cabin air filter - 301x170x15mm**

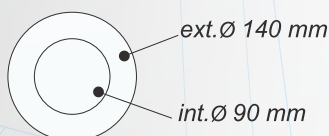
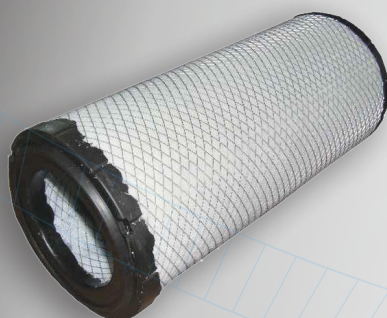
Filtro in carta / filter - COD. G02070022

PK.16 (PREFILTRO)

Cabin Air Filtration: Synthetic nonwoven filter media, no-curing impregnation

Physical Properties

Not cured grammage:	108 g/m ²	TM-CQ/004
Thickness:	635 µm	TM-CQ/005
Not cured burst strength:	250 kPa	TM-CQ/008
Not cured Gurley stiffness:	2.3 g	TM-CQ/012
Pressure drop at 240 l/min/100cm ² :	5.5mmWC	TM-CQ/009
Air Permeability 2 mBar/20cm ² :	1542l/m ² sec	--
Bubble test - 1BP	85mmWC	TM-CQ/013
Bubble test - FAOP	112 mmWC	TM-CQ/013
Max Pore Size		

Filtro aria abitacolo / Cabin air filter - 301x170x15mm

Filtro a carboni attivi / Activated carbon
filter - COD. G02070021CA

PK.15 Carbon Filter (FILTRO CARBONE)

Material composition:

Reticulated polyurethane foam coated with activated granular carbon.

weight por unit area (g/m ²) according to DIN EN 12127:	2.000±200
Activated carbon content (g/m ²):	1.400±200
Thickness (mm) LG 050:	11.0±0.5
Differential pressure (Pa) 0,8m/s:	<30
Butane absorption (mg/cm ²) (80ppm n-Butan, V=0,17m/s 23°C, 50%humid)	